



**CITY AND COUNTY OF SWANSEA  
DINAS A SIR ABERTAWE**

**BRYNHYFRYD INFANT AND JUNIOR SCHOOLS**

**PROPOSAL TO AMALGAMATE THE SCHOOLS INTO AN ALL-THROUGH PRIMARY  
FROM 1ST SEPTEMBER 2015**

**Introduction to the Proposal**

1. This consultation is on a proposal to amalgamate Brynhyfyrd Infant\* and Junior Schools. Although we use the term 'amalgamate', the infant and junior schools would close in legal terms on 31<sup>st</sup> August 2015 and a new primary school for pupils aged 3-11 would be established on 1<sup>st</sup> September 2015 on the same sites and using the same buildings.
2. Closing both existing schools as part of the amalgamation ensures that both schools are treated on an equal basis.
3. Before moving forward with its proposals, the Council wishes to seek the views of all of those with a likely interest in the proposal so that their views can be taken into account before decisions are made. Those being consulted on this proposal are the pupils, parents, governors and staff of the infant and junior schools, as well as neighbouring schools, the local community and other interested parties.
4. The consultation period will take place between 20<sup>th</sup> May 2014 and 30<sup>th</sup> June 2014. A report on the outcome of these consultations will be submitted to a Cabinet meeting of elected members on 23<sup>rd</sup> September 2014.

**What would this proposal mean?**

5. At the moment, Brynhyfyrd Infant and Junior Schools are two separate schools with two headteachers, two groups of staff, two separate budgets and two governing bodies. Information on both schools is provided at Appendix A.
6. If the two schools were to be amalgamated, there would be a single school with an age range of 3 - 11 years. Therefore, a child entering the nursery would continue in the school until they were 11 years old (Year 6) and ready to move on to a secondary school. Information on the proposed new school is provided at Appendix B.
7. There would be one headteacher, one group of staff and one budget. There would also be a single governing body.
8. Existing buildings would be used to form the Primary School.

*\* Note that Brynhyfyrd Infant School also includes the Nursery on the Junior site*

## **Why has this proposal been made?**

9. There are several reasons why amalgamation of the two schools is proposed:
- The proposal supports the Authority's Primary School philosophy. The highest priority of the Authority is ensuring that schools provide the best possible education to its pupils
  - The Council has been working on a wide ranging school organisation programme, called Quality in Education (QEd) 2020, for some time. This proposal has been identified following much discussion with headteachers, governors and other interested parties that have been working with the Council on QEd 2020. Further information on QEd 2020 can be found on the Council's website [www.swansea.gov.uk/qed](http://www.swansea.gov.uk/qed)
  - Brynhyfryd Infant and Junior Schools are the only remaining separate infant and junior schools in Swansea.
  - Deputy Headteacher vacancies have recently arisen at both schools. The Headteacher of the Junior School is also on a part-time phased retirement and has recently announced that she will retire on 31<sup>st</sup> August 2014.
  - A combined school will have a larger combined budget and will have more flexibility and scope in relation to the use of resources available e.g. sharing of staff and equipment, economies of scale for purchases etc.

## **What are the potential benefits of Amalgamation?**

10. The benefits of establishing all through primary provision are:
- Parents only have to contact a single headteacher, governing body and staff
  - A shared ethos and philosophy
  - A single set of policies and code of behaviour
  - One programme of study and system developed across the school
  - Coherent continuity of education provision for pupils
  - More effective transition from Foundation forwards to Key Stage 2
  - Greater opportunities for staff continuing professional development and understanding of child development
  - A single school can provide continuity of the curriculum for pupils from 3 to 11 years old
  - There are benefits for the whole school community, for example where older children can work with younger children

- A primary school would have a larger team of staff than either of the existing infant and junior schools, so could provide more flexibility in terms of covering all of the subjects in the curriculum. It can provide staff with more opportunities to develop their skills across the whole primary age range and can enable the best use to be made of staff expertise.
- The facilities previously available to two separate schools could be available to all pupils in a combined school
- Pupils would no longer have to apply to be admitted to the Junior School at Year 3, they would only have to apply once in future for admission to Reception.

The latest Estyn Inspection ratings for the schools were:

	Infant	Junior
Date of Inspection	June 2013	February 2012
Current Performance	Good	Good
Prospects for Improvement	Good	Good

The summary of the Estyn reports can be found at Appendix C.

The full reports can be found at:

<http://www.estyn.gov.uk/english/inspection/inspection-reports/>

### **What are the main challenges for this proposal?**

11. Amalgamating two schools into one will inevitably cause some disruption and uncertainty for a period of time, although experience shows that this can be kept to a minimum and that the children's education does not suffer.
12. There will be staffing implications in that, for example, there will only be funding for one headteacher and one deputy (although in previous amalgamations some of the new governing bodies have decided to appoint two deputy headteachers if their budget allowed). Parents are used to dealing with two headteachers and two groups of staff and this would obviously change if amalgamation went ahead.
13. The school would continue to be based over two separate sites. It is not anticipated that pupils would need to move between sites to any great extent during a normal school day and it is likely that the school will continue to operate as an infant site, a junior site and a nursery unit. Additional funding is provided in the budget share for schools that are based on a split-site.

### **What are the Next Steps?**

14. Consultation will be carried out during May and June 2014 and the results will be reported to a Cabinet meeting of the City and County of Swansea on 23<sup>rd</sup> September 2014. If the Cabinet decide not to proceed, that will be the end of this proposal for the foreseeable future.

15. However, if Cabinet decide to go ahead, there would be a statutory procedure to follow to make the proposed changes for September 2015. A statutory notice outlining the proposals would need to be published, inviting any formal written objections to be submitted within 28 days of publication of the notice (a copy of the notice will be provided to parents/carers and staff members and it will also be published at the schools, at the nearest library and on the Council Website [www.swansea.gov.uk](http://www.swansea.gov.uk)). If there are objections, the Council will need to consider the objections to the proposal before making a decision.
16. The provisional timetable and procedure which is required by law will be as follows:

6 <sup>th</sup> October 2014	Publication of statutory notices (followed by a 28-day objection period).
3 <sup>rd</sup> November 2014	End of objection period. If there are no objections to the proposal, the amalgamation will be implemented as per the statutory notice. If there are objections, the proposal will fall to Council for determination at their meeting on 6 <sup>th</sup> January 2015.

The earliest date when the new primary school could come into being would be 1<sup>st</sup> September 2015.

Further information on the timetable can be found at Appendix D.

### **Governing Body**

17. A Temporary Governing Body would be established by the Authority, if the proposal proceeds, to take all appropriate action in advance of the new school being set up. This will include agreeing a staffing structure.
18. The Authority will make the appointments to the Temporary Governing Body (with the exception of the Community Governors who will be appointed by the Temporary Governing Body). It is likely that many of the governors on the Temporary Governing Body will be governors of the existing infant and junior Governing Bodies in order to ensure continuity, although ultimately this would be a decision for the Authority.
19. The existing infant and junior school Governing Bodies will continue to operate until both schools are closed i.e. until the end of the Summer Term 2015. The Temporary Governing Body will continue to operate until the new school's permanent Governing Body is constituted (this will be by 31<sup>st</sup> December 2015).

### **Staffing**

20. The new school would be funded for one Headteacher and one Deputy. The Temporary Governing Body would need to appoint to these posts and this may involve national advertisements. Once the Headteacher is appointed he/she would work closely with the temporary Governing Body in establishing a new staffing structure.

21. It is vitally important to ensure a smooth transition in order to seek to minimise any anxiety or uncertainty for affected staff. Regular communication with staff will be important so that progress can be reported and staff kept informed.
22. The new staffing structure would take into account a number of factors, including the delivery of curriculum, class size limits and the likely budget available. The Local Authority will recommend to Governors that all teaching and associate staff posts for the new school should be “ring-fenced” to the staff in the existing two schools. The Authority will also recommend that, wherever possible, staff be matched to posts in the new structure and this could involve interviews. If more than one member of staff is matched or applies for a post then this would normally be decided by competitive interview.

### **Building/Investment needs**

23. This proposal can proceed without specific capital investment. The combined Infant and Junior sites already have sufficient facilities to take all of the pupils without any building work. The capacity of the new school using the existing sites would be for 420 full-time pupils plus nursery. There were 392 full-time pupils on roll, plus nursery, in the schools in January 2014. See Appendix A for further details.

### **Admission Arrangements**

24. All full-time pupils on roll at the Infant and Junior schools on 31<sup>st</sup> August 2015 would transfer to the new primary school on 1<sup>st</sup> September 2015. Pupils applying to Nursery and Reception in September 2015 would have to apply according to the Council's agreed Admission Arrangements. Admission information for the City & County of Swansea can be found at <http://www.swansea.gov.uk/index.cfm?articleid=43269>
25. From September 2015 the Admission Arrangements would apply to the new Primary School in exactly the same way as for other primary schools in Swansea. Pupils would no longer have to apply to be admitted to the Junior School at Year 3, they would only have to apply once in future for admission to Reception. The Admission Number would continue to be the same for all year groups i.e. 60. (The Admission Number is the maximum number of pupils that can be admitted in any year group in the school. Infant and junior schools each have their own Admission Number).

### **Transport**

26. Transport would continue to be provided for any pupils that met agreed criteria i.e. those living more than 2 miles from their catchment area school or where there was no available walking route to school. For further information on home to school transport please see <http://www.swansea.gov.uk/index.cfm?articleid=10438>

## **Financial Information**

27. Amalgamating schools produces relatively limited savings if all existing accommodation is used. Initially there are some additional costs and New School Funding is provided for the first 3 years to support transition. Appendix D gives financial information on this proposal.
28. All schools are funded through a formula to ensure as much fairness as possible. The new school would therefore be funded on the same basis as other all-through primary schools. Appendix D gives an example of possible funding levels delegated to the new school based on current information.

## **Community Impact Assessment/Equalities Impact Assessment**

29. A Community Impact Assessment was carried out prior to agreement to consult on this proposal. The Assessment did not identify any issues. The Assessment can be found at <http://www.swansea.gov.uk/brynhyfrydamalgamation>
30. An Equalities Impact Assessment was carried out prior to agreement to consult on this proposal. The Assessment did not identify any issues. The assessment can be found at <http://www.swansea.gov.uk/brynhyfrydamalgamation>

## **UNCRC**

31. Article 12 of the United Nations Convention on the Rights of the Child states that children have the right to have a say in decisions that affect them and to have that view taken seriously. Therefore throughout the process we will ensure that children and young people have a chance to have a say on the proposals and on how they think it will affect their rights under the convention.

It is our view that either children's rights will be enhanced under the proposal or they will not be affected.

A move to the primary model with a single school leadership group and a single Governing Body will ensure better continuity of the curriculum and will ensure that a single learning ethos is carried throughout the education of the pupils, which supports the rights of the child under articles 28 and 29. As the school will continue to operate on a dual site, articles 28 and 29 will not be negatively affected in terms of the amount of learning space available, and article 31 will not be affected as the play opportunities currently available will continue.

## What do you now have to consider?

32. We would like your views as to whether or not you support the amalgamation of Brynhyfryd Infant and Junior Schools.

### How do you make your views known?

33. Consultation meetings will be held and you are welcome to attend the appropriate meeting:

Pupils, parents, staff and governors of Brynhyfryd Infant School and Brynhyfryd Junior School

Date: **Wednesday 4<sup>th</sup> June 2014**

Venue: **Brynhyfryd Junior School Main Hall**

Meeting for Infant School Council: **2:00 p.m.** (infant site for this meeting only)

Meeting for Junior School Council: **2:45 p.m.**

Meeting for all Staff\*: **3:30 p.m.**

Meeting for all Governors\*: **4:45 p.m.**

Meeting for all Parents\*: **5:45 p.m.**

\*This is a joint meeting for both schools

34. You are also welcome to put your views in writing on the attached pro-forma (Appendix F) to:

Mr. Arwyn Thomas  
Chief Education Officer  
Civic Centre  
Oystermouth Road  
Swansea  
SA1 3SN

(Please mark for the attention of Ms Kelly Small)

Or e-mail [kelly.small@swansea.gov.uk](mailto:kelly.small@swansea.gov.uk)

35. All views must be received by no later than 30<sup>th</sup> June 2014. Views received will then be collated into a Consultation Report together with a response from the Local Authority and this report will be given to Cabinet at their meeting on 23<sup>rd</sup> September 2014 for them to decide if the proposal should move to the next stage of the publication of a Statutory Notice.

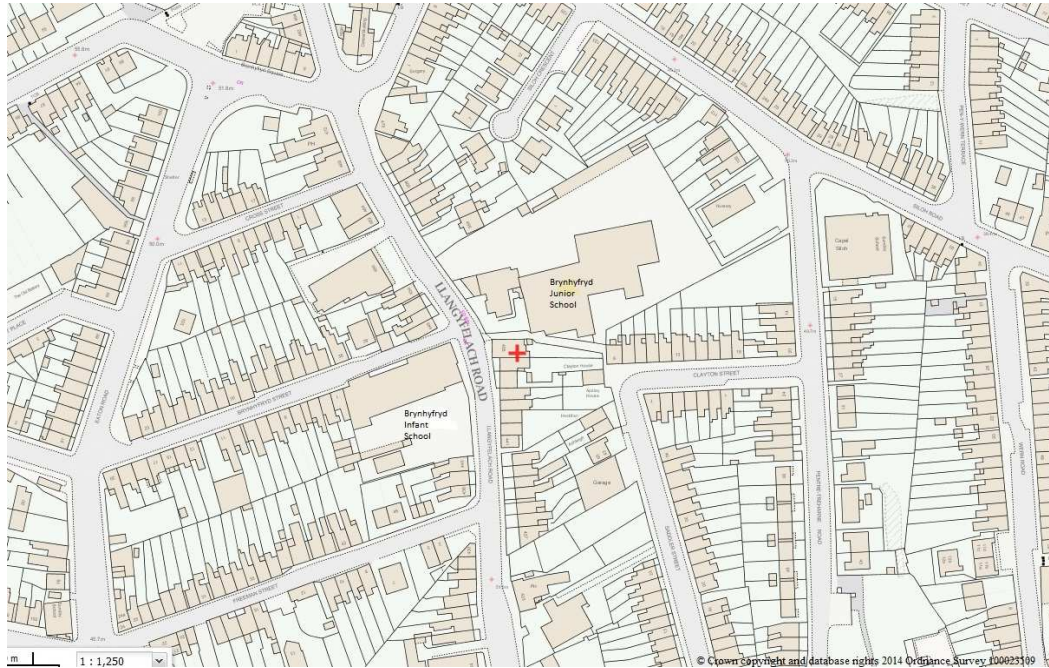
If you require this document in Welsh or in a different format, please contact Kelly Small on 636686.

Please note that under the Freedom of Information Act any responses received can be requested and may have to be made public. All views received in writing during the consultation and any subsequent objection period will be forwarded to Councillors that participate in the Cabinet meetings. Correspondence will also be recorded and acknowledged.

Information – Brynhyfyd Infant and Junior Schools

**Schools affected by the proposal:**

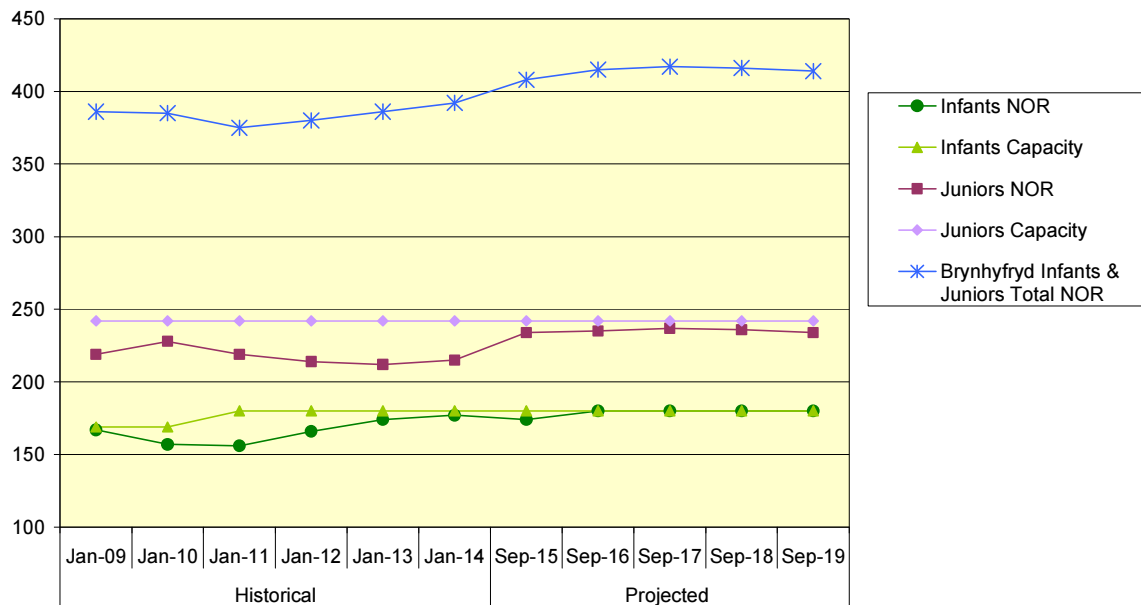
1. Brynhyfyd Infant School, Llangyfelach Road, Brynhyfyd, Swansea SA5 9LN
2. Brynhyfyd Junior School, Llangyfelach Road, Brynhyfyd, Swansea SA5 9LN



Both schools are English Medium Community Schools.

**Number of Pupils on roll:**

**Historical and Projected Numbers  
Brynhyfyd Infants & Juniors Full Time NOR**





Brynhyfryd Infants

	Historical						Projected				
	Jan-09	Jan-10	Jan-11	Jan-12	Jan-13	Jan-14	Sep-15	Sep-16	Sep-17	Sep-18	Sep-19
Full Time NOR	167	157	156	166	174	177	174	180	180	180	180

Brynhyfryd Juniors

	Historical						Projected				
	Jan-09	Jan-10	Jan-11	Jan-12	Jan-13	Jan-14	Sep-15	Sep-16	Sep-17	Sep-18	Sep-19
Full Time NOR	219	228	219	214	212	215	234	235	237	236	234

Combined Total

	Historical						Projected				
	Jan-09	Jan-10	Jan-11	Jan-12	Jan-13	Jan-14	Sep-15	Sep-16	Sep-17	Sep-18	Sep-19
Full time NOR	386	385	375	380	386	392	408	415	417	416	414
FTE including Nursery	422	425.5	420	421	423	434	438	446	447.5	446.5	444.5

Combined Stats (Full Time NOR)

	Historical						Projected				
	Jan-09	Jan-10	Jan-11	Jan-12	Jan-13	Jan-14	Sep-15	Sep-16	Sep-17	Sep-18	Sep-19
Infants NOR	167	157	156	166	174	177	174	180	180	180	180
Infants Capacity	169	169	180	180	180	180	180	180	180	180	180
Juniors NOR	219	228	219	214	212	215	234	235	237	236	234
Juniors Capacity	242	242	242	242	242	242	242	242	242	242	242
Brynhyfryd Infants & Juniors Total NOR	386	385	375	380	386	392	408	415	417	416	414

Nursery Info

	Jan-09	Jan-10	Jan-11	Jan-12	Jan-13	Jan-14
Rising 3's	16	26	20	20	18	20
Funded 3	56	55	70	62	56	64
Combined Nursery	72	81	90	82	74	84

### Condition of Buildings:

All schools in Swansea are allocated a condition rating as follows:

- A = Performing as intended and operating efficiently
- B = Performing as intended but exhibiting minor deterioration
- C = Exhibiting major defects and/or not operating as intended
- D = Life expired and/or risk of imminent failure

The current condition rating of the Brynhyfryd schools as at March 2014 is as follows:

- Infant school - condition rating 'B'
- Junior school - condition rating 'B'

Information – New Primary School

**Location of New Primary School:**

Llangyfelach Road, Brynhyfryd, Swansea SA5 9LN (using existing infant and junior school sites – see map at Appendix A)

**Category and Language Medium:**

The new school will be an English Medium Community School (the same as the existing infant and junior schools)

**Age Range:**

3-11 (Nursery to Year 6)

**Capacity of School and Admission Number:**

Capacity – 420

Admission Number - 60

## Summary

<b>The school's current performance</b>	<b>Good</b>
<b>The school's prospects for improvement</b>	<b>Good</b>

### Current performance

The current performance of the school is good because:

- the achievement and progress in pupils' work are strong over time;
- the provision of residential experiences, in line with the pupils' ages, is excellent;
- the planning of lessons and other learning experiences is stimulating;
- there are many strengths in the teaching across the school;
- the use and impact of support staff are very good;
- the learning environment, both indoors and outdoors, is vibrant; and
- there are good partnerships with parents and the local community.

However:

- the pupils' attendance levels over time are judged as adequate when compared to those in similar schools.

### Prospects for improvement

The school's prospects for improvement are good because:

- the headteacher, senior management team and governors provide a very clear direction for the work of the school;
- the school has a reliable track record of managing improvements over time;
- the school's self-evaluation report is thorough and there are clear targets for improvement in the school development plan; and
- all the staff are positive and are actively involved in professional development and training.

## Summary

<b>The school's current performance</b>	<b>Good</b>
<b>The school's prospects for improvement</b>	<b>Good</b>

### Current performance

The current performance of the provider is good because:

- most pupils make good progress in learning and achieve good standards in skills across the curriculum;
- nearly all teachers provide valuable learning experiences that motivate pupils to learn;
- there is a very warm and welcoming ethos which makes pupils feel secure and happy in school;
- the good support and guidance provided contributes significantly to pupils' wellbeing and has a very positive impact on learning;
- most pupils are enthusiastic and participate fully in lessons; and
- the governing body has a strong role in supporting and challenging the school.

### Prospects for improvement

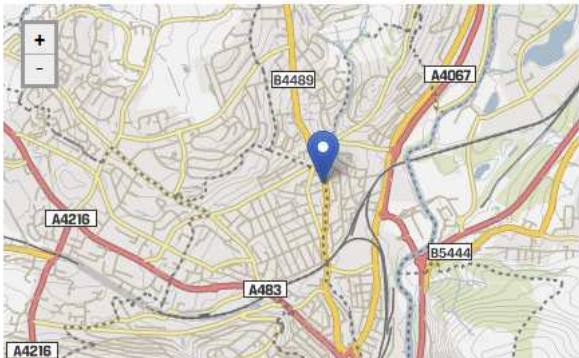
The prospects for improvement of the provider are good because:

- the school has a proven track record of securing improvement in standards and performance;
- the analysis and very good use of performance data from an extensive range of different sources have a very positive impact on improving standards;
- the school senior management team and other leaders through systematic monitoring identify strengths and areas for development;
- the clear vision of the school is embraced by all the staff, governors, pupils and parents; and
- the strong partnerships with parents, other schools and industry help to improve the quality of the provision and the standards pupils achieve.

Further information and interactive charts can be accessed via <http://mylocalschool.wales.gov.uk/>. Select School Type: Primary, Area: Swansea.  
Here is an extract of some of the information on the My Local School website.

### Brynhyfryd Infants School

Ref. 6702005



**Basic Details**

**Local Authority**  
Swansea


**Type**  
Infants and Nursery

**Gender Mix**  
Mixed


**Language**  
English medium

 Defining schools according to Welsh medium provision

**Contact Details**

 Llangyfelach Road  
Brynhyfryd  
Swansea  
SA5 9LN

 01792 650129

**External Links**  
Estyn Report 

Summary	Pupils	Staff	Finance	Attainment ▾	Benchmarking ▾	Attendance
<b>248</b> Number of pupils on roll <small>Year: 2013</small>	<b>21.1%</b> Free school meals (FSM) - 3 year average <small>Year: 2013</small>	<b>21</b> Pupil Teacher Ratio (PTR) <small>Year: 2013</small>	<b>92.1%</b> % Attendance during the year <small>Year: 2013</small>	<b>£3,581</b> School budget per pupil <small>Year: 2014</small>	<b>85.7%</b> Pupils achieving the expected outcome in the Foundation Phase areas of learning <small>Year: 2013</small>	

### Brynhyfryd Junior School

Ref. 6702003



**Basic Details**

**Local Authority**  
Swansea

**Type**  
Juniors

**Gender Mix**  
Mixed

**Language**  
English medium

 Defining schools according to Welsh medium provision

**Contact Details**

 Llangyfelach Road  
Brynhyfryd  
Swansea  
SA5 9LN

 01792 650192

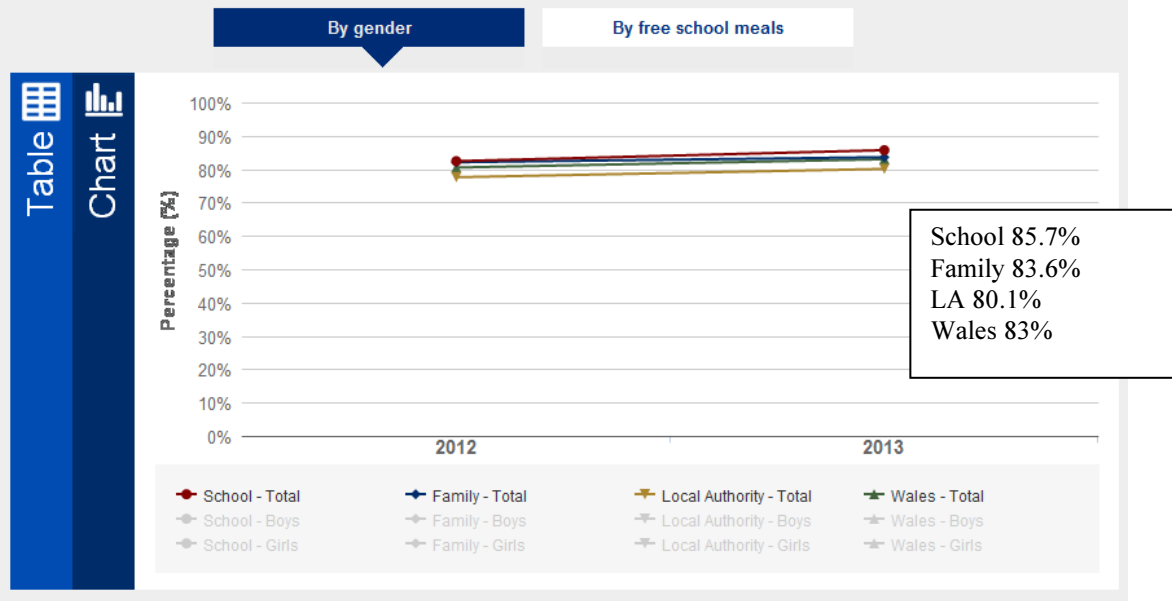
**External Links**  
Estyn Report 

Summary	Pupils	Staff	Finance	Attainment ▾	Benchmarking ▾	Attendance
<b>212</b> Number of pupils on roll <small>Year: 2013</small>	<b>24.5%</b> Free school meals (FSM) - 3 year average <small>Year: 2013</small>	<b>21.3</b> Pupil Teacher Ratio (PTR) <small>Year: 2013</small>	<b>92.1%</b> % Attendance during the year <small>Year: 2013</small>	<b>£3,261</b> School budget per pupil <small>Year: 2014</small>	<b>70.7%</b> Pupils achieving the expected level in the core subjects at Key Stage 2 <small>Year: 2013</small>	

## Brynhyfryd Infants School

### ● Pupils achieving the expected outcome in the Foundation Phase areas of learning

Represents the percentage of pupils achieving at least outcome 5 in "Personal and social development, well-being and cultural diversity", "Language, literacy and communication skills - English" / "Language, literacy and communication skills - Welsh" and "Mathematical development" in combination.

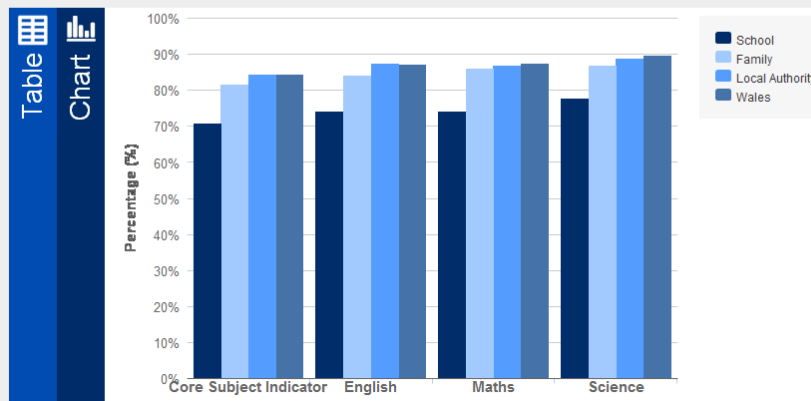


## Brynhyfryd Junior School

### Key Stage 2 (Year 6)

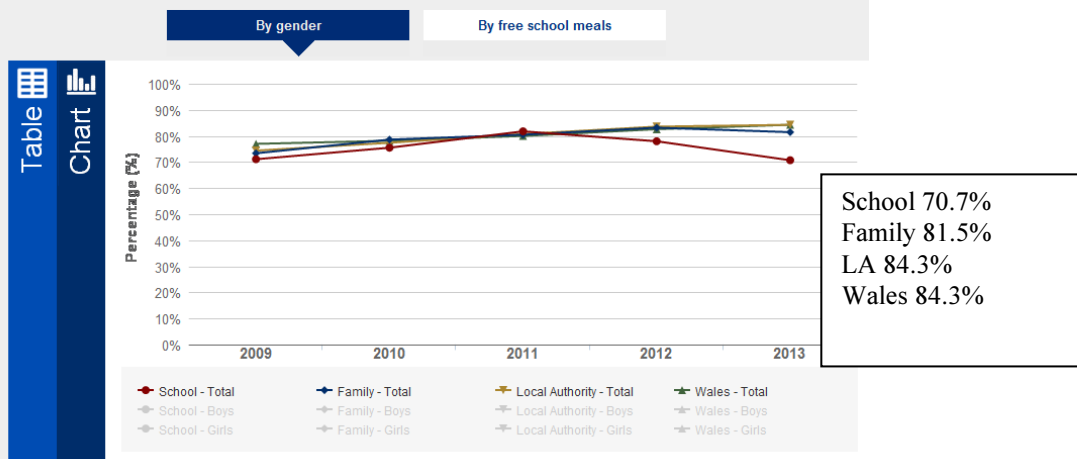
#### ● % Pupils who have reached the expected level, 2013

Represents the percentage of pupils achieving at least level 4 by subject



#### ● % Pupils who have reached the expected level - Core subject indicator

Represents the percentage of pupils achieving at least level 4 in English or Welsh (first language), mathematics and science in combination.



Benchmarking compares the performance of one school against others who have similar levels of pupils with free school meals (FSM). FSM is regarded as the main indicator of social deprivation in schools. This allows a comparison of the performance of a school against others who are in the same FSM category, and who might therefore have a similar intake of pupils from deprived backgrounds. For the purposes of these charts, schools have been grouped together with other schools that have similar levels of free school meals. For example:

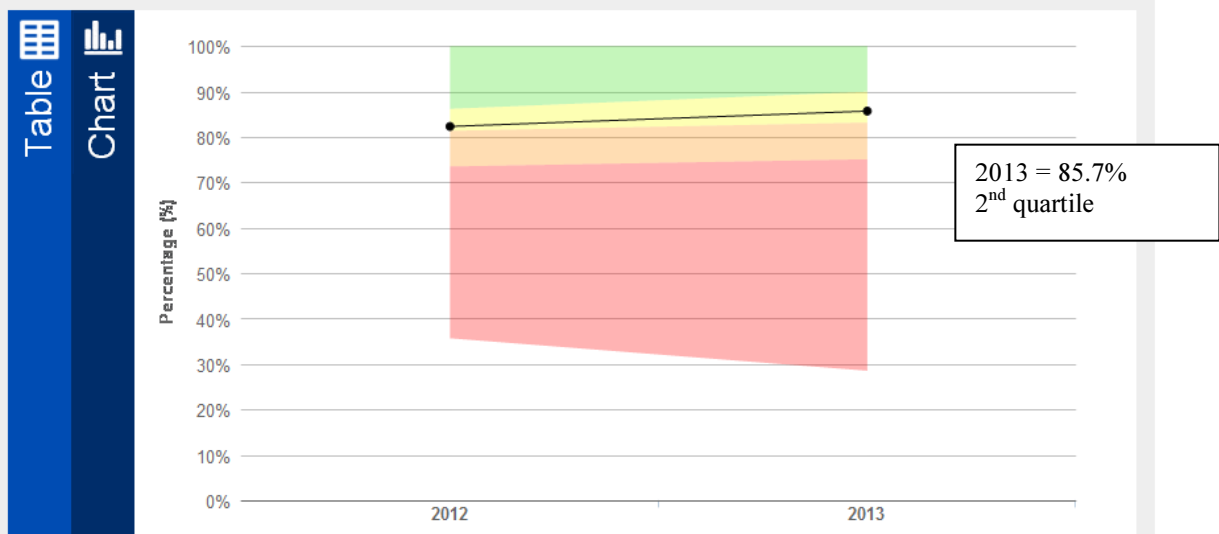
The **green section** represents the highest performing 25% of schools with similar levels of free school meals to this school. Therefore if the data point for this school is in the green area, its attainment levels are higher than many other schools with similar levels of pupils from deprived backgrounds.

The **red section** represents the lowest performing 25% of schools with similar levels of free school meals to this school. Therefore if the data point for this school is in the red area, its attainment levels are lower than many other schools with similar levels of pupils from deprived backgrounds.

### Brynhyfyd Infants School

#### ● Pupils achieving the expected outcome in the Foundation Phase areas of learning

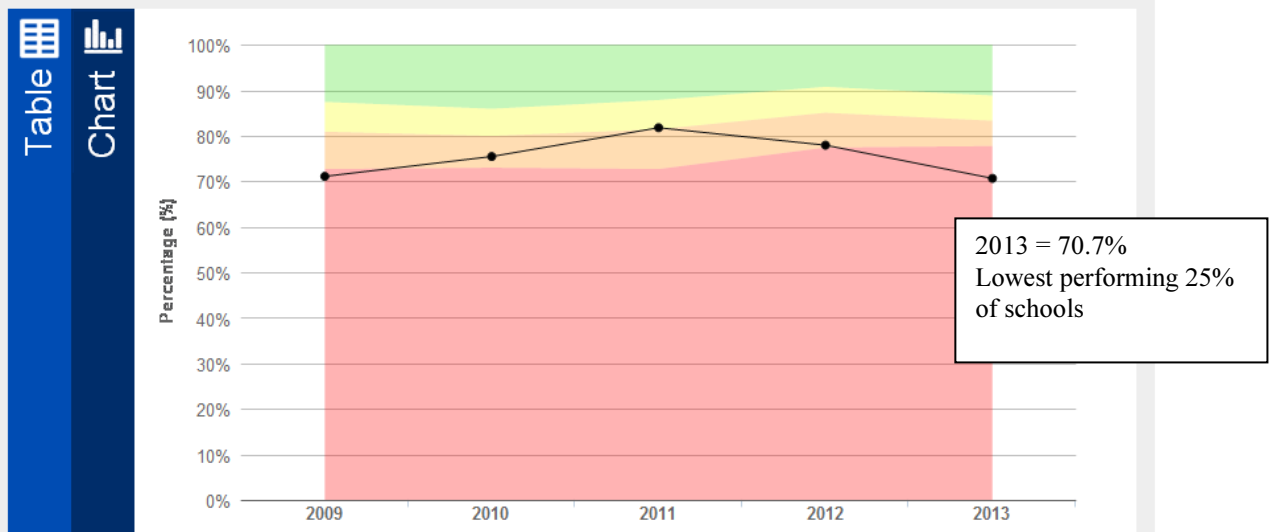
Represents the percentage of pupils achieving at least outcome 5 in "Personal and social development, well-being and cultural diversity", "Language, literacy and communication skills - English" / "Language, literacy and communication skills - Welsh" and "Mathematical development" in combination.



### Brynhyfyd Junior School

#### ● % Pupils who have reached the expected level - Core subject indicator

Represents the percentage of pupils achieving at least level 4 in English or Welsh (first language), mathematics and science in combination.



## Financial Information

(Figures exclude any pupil roll change)

Implement Proposal  
Sep-15

Revenue	Financial Year					
	2014/15	2015/16	2016/17	2017/18	2018/19	2019/20
<b>Budget Shares:</b>						
Bryhyfryd Infant	£748,515	£320,480	£0	£0	£0	£0
Bryhyfryd Junior	£699,546	£285,803	£0	£0	£0	£0
New Primary School (1)	£0	£810,998	£1,385,959	£1,370,001	£1,354,044	£1,347,501
<b>Total</b>	<b>£1,448,061</b>	<b>£1,417,281</b>	<b>£1,385,959</b>	<b>£1,370,001</b>	<b>£1,354,044</b>	<b>£1,347,501</b>
<b>Admin of Proposal:</b>						
Public Notices (2)	£0	£0	£0	£0	£0	£0
Pre Appointment of Head (if necessary)	£0	£27,760	£0	£0	£0	£0
Clerk to Governors (3)	£0	£0	£0	£0	£0	£0
Advertisement Costs for Head (4)	£0	£0	£0	£0	£0	£0
Advertisement Costs for Deputy (4)	£0	£0	£0	£0	£0	£0
<b>Transitional costs (5)</b>	<b>£0</b>	<b>£0</b>	<b>£0</b>	<b>£0</b>	<b>£0</b>	<b>£0</b>
<b>Transport:</b>						
Current	£0	£0	£0	£0	£0	£0
Estimated new costs	£0	£0	£0	£0	£0	£0
<b>Redundancy/ER Costs (Estimated):</b>						
Teaching - One-off	£0	£59,268	£0	£0	£0	£0
Teaching - Ongoing	£0	£0	£1,593	£1,593	£1,593	£1,593
Support Staff - One-off	£0	£25,109				
Support Staff - Ongoing	£0	£0	£9,000	£9,000	£9,000	£9,000
<b>Total Revenue</b>	<b>£1,448,061</b>	<b>£1,529,418</b>	<b>£1,396,552</b>	<b>£1,380,594</b>	<b>£1,364,637</b>	<b>£1,358,094</b>
Difference from previous year		£81,357	-£132,866	-£15,958	-£15,957	-£6,543
Cumulative Difference		£81,357	-£51,509	-£67,467	-£83,424	-£89,967

Capital	Financial Year					
	2014/15	2015/16	2016/17	2017/18	2018/19	2019/20
Bryhyfryd Infant	£0	£0	£0	£0	£0	£0
Bryhyfryd Junior	£0	£0	£0	£0	£0	£0
<b>Total Capital</b>	<b>£0</b>	<b>£0</b>	<b>£0</b>	<b>£0</b>	<b>£0</b>	<b>£0</b>

### Notes:

(1) Assumes no additional teaching protections will apply at new school, although there potentially could be protected DH that would be funded from within the ISB

(1) Assumes all preferred placement pupils will move to new school

(1) New School Funding will apply and is included

(1) Budget Shares assume rateable values unchanged

(2) Public Notices no longer need to be published in the local press. There will be some printing costs but these will be minimal.

(3) Staff from Pupil Governor Unit would undertake this role for temp governing body

(4) If required - Governors can agree to ringfence posts to existing Heads/Deputies and not go to advert

(5) e.g. telephones, stationary etc. To be funded from New School Funding delegated to school

## Comparative Information

Delegated School Budget Share 2014/2015:

Bryhyfryd Infants -	£748,515
Bryhyfryd Juniors -	£699,546
<b>Total Infant + Junior -</b>	<b>£1,448,061</b>

Estimated Budget Share 2014/15 for Combined School:

New Primary School -	£1,347,501
----------------------	------------

NB. Schools that are amalgamated are given an additional entitlement in the budget share as follows:

1<sup>st</sup> Academic year – an amount equating to the salary of 1 teacher

2<sup>nd</sup> Academic year – an amount equating to the salary of 2/3 of a teacher

3<sup>rd</sup> Academic year – an amount equating to the salary of 1/3 of a teacher

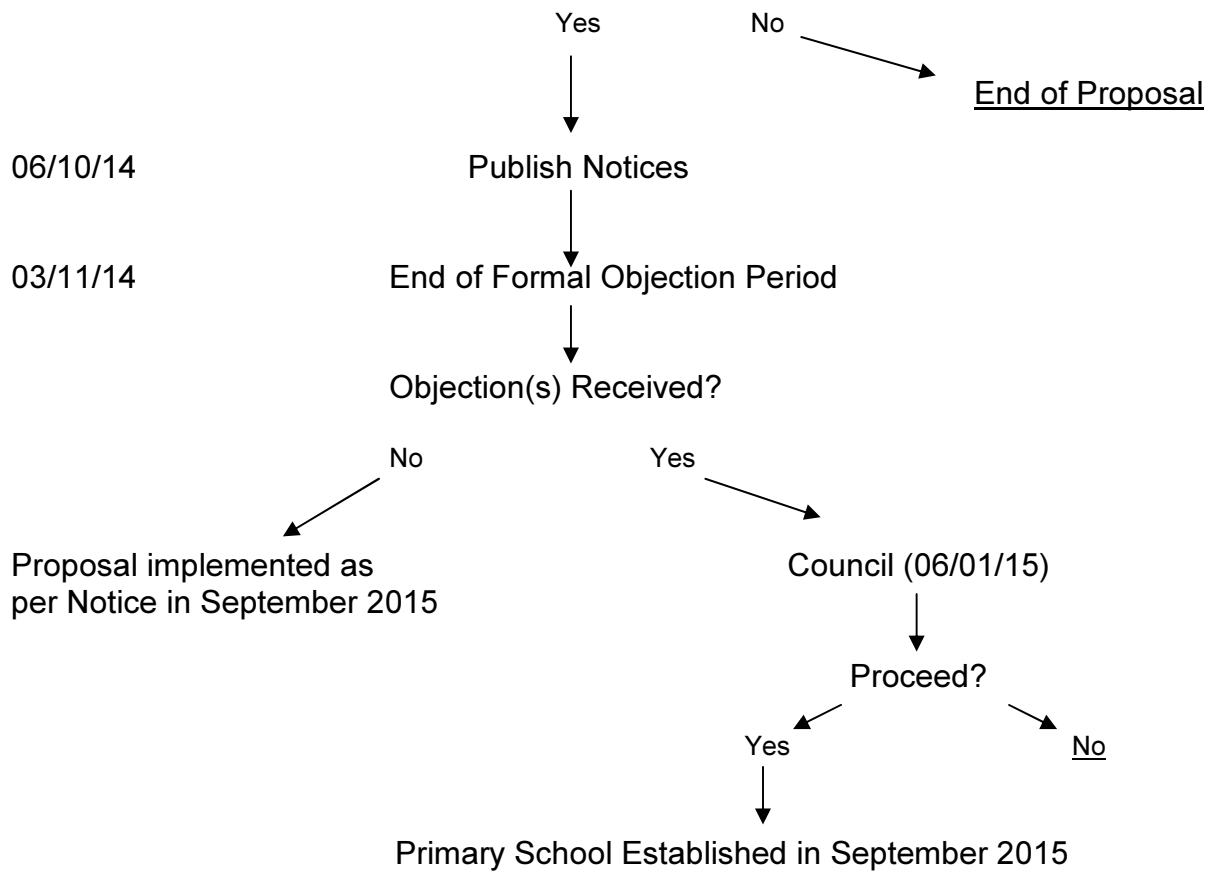
This amount will be **additional** to the estimated 2014/15 formula generated budget share shown above. Note that, although based on a teacher's salary, this New School Funding should be used for premises and other transitional costs.

**Please note that this primary budget is a broad estimate only and is based on 2014/15 pupil numbers and other information that will need to be updated if the proposal is accepted for September 2015.**



**Timetable**

20/05/14	Consultation letters circulated
04/06/14	Consultation meetings for Pupils, Parents, Staff & Governors of Brynhyfryd Infant and Junior School
30/06/14	Closing date for views on proposal to be received by Education Department. Consultation report produced.
23/09/14	Cabinet decide whether to publish statutory notices





## Response Form

### Proposal to Amalgamate Brynhyfryd Infant and Junior Schools

Please note that under the Freedom of Information Act any responses received can be requested and may have to be made public. All views received in writing during the consultation and any subsequent objection period will be forwarded to Councillors that participate in the Cabinet meetings. Correspondence will also be recorded and acknowledged.

Please send in your response by **no later than 30th June 2014**

If you would like us to acknowledge receipt of your response, please provide your email details or address on the form below.

1. Are you in favour of the proposal?

Yes	
No	

2. Please indicate if you are responding as:

Pupil	Parent/ Carer	Member of Staff	Governor	Community Member	Other (please indicate)

3. Comments on the proposal (positive and negative) – please continue overleaf if required

4. Your name: \_\_\_\_\_

5. If you would like to receive an acknowledgement of receipt please provide your email or address below:

6. Please indicate if you would like to receive notification of when the consultation report is published using the email/address in 4 above.

Yes	
No	

Please return to:

Kelly Small, Education Department, Civic Centre, Swansea SA1 3SN.

Visit our website and complete the survey by going to  
[www.swansea.gov.uk/brynhyfrydresponse](http://www.swansea.gov.uk/brynhyfrydresponse)

Alternatively you can fax the completed form to 01792 636553 or scan and send to  
[kelly.small@swansea.gov.uk](mailto:kelly.small@swansea.gov.uk)